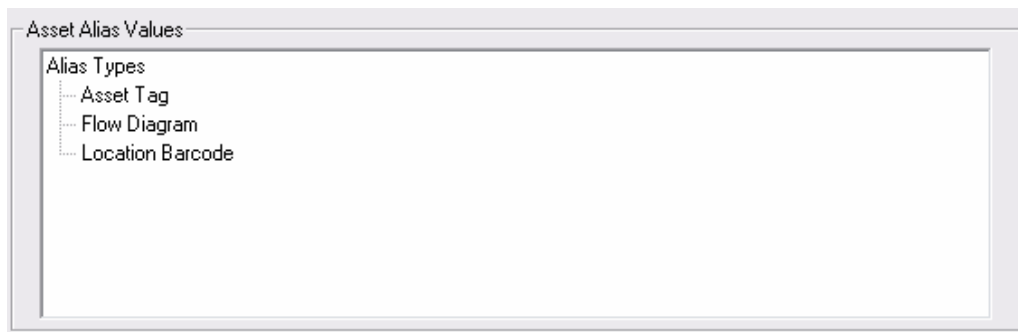
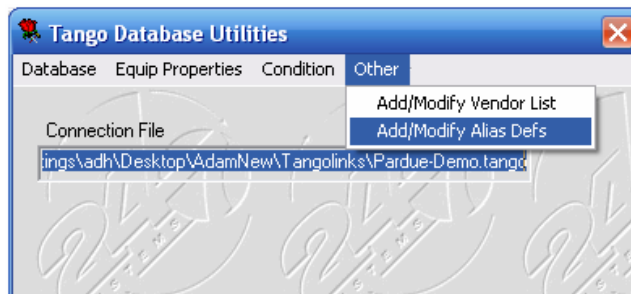


Aliases

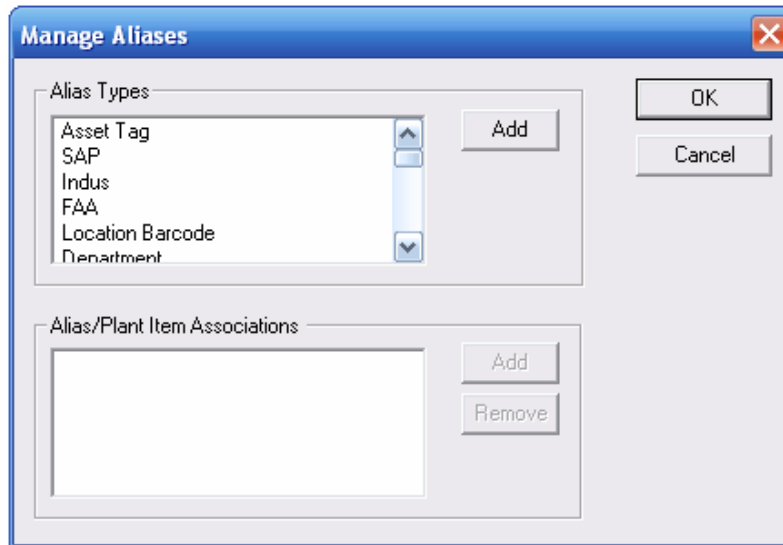
Aliases are alternate names user by other systems which describe a plant location. Tango uses aliases to help the user find a location if that location's name is known by another plant system. Also aliases are used to import or export information to/from other plant systems. Aliases can be used to associate a Tango location with, CMMS number to import information into the CMMS system, barcode to locate a location in a Condition Assessment Task quickly, or a Predictive Maintenance Technology number to import information into Tango. To view an alias for a location right click on the location and select View / Edit Location Information. In the window alias information will appear under Alias Values.



If an appropriate Alias type is not available it may be added by opening Database Utilities Program, select Other and then Add/Modify Alias Defs.



To add an appropriate asset name select the Add button in the Alias Types box. Enter the name and then select OK. Each alias must be turned on for each tree level location (ex. Unit, Function, etc). To turn on the alias for a location select it in the Alias types box and then select the Add button in the Alias/Plant Item Associations box. In the open window select which tree level the alias is associated with. To add the same alias to another tree level select it again, then select the Add button Alias/Plant Item Associations box and finally select the tree level location.



To add a value to the Alias for a location right click on the location and select View/Edit Location Info. In the new window right click on the alias in the Alias Values box. Enter the alias value in the New Alias Window and select OK.

