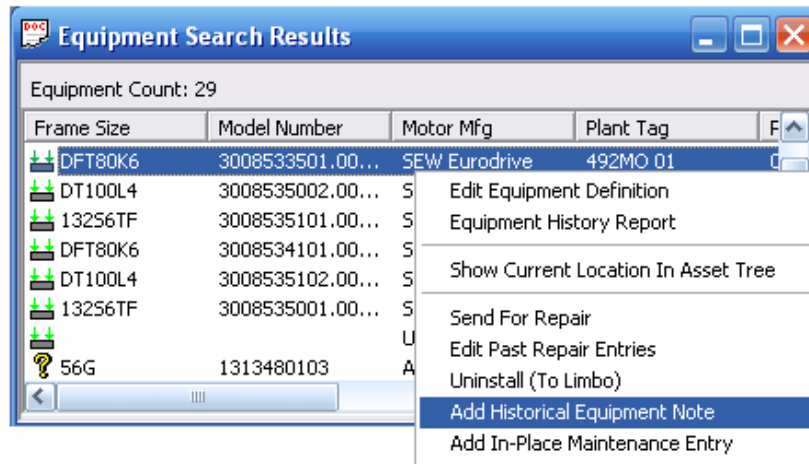


Historical Equipment Note v2.06 (New Feature for v2.06)

A Historical Equipment Note maybe added to equipment that is not installed in a location or that is in stores. Find the piece of equipment using the Quick Search or Find Equipment Button. Right click on the piece of equipment and then select Add Historical Equipment Note.



This will open the Historical Equipment Note Window. The *Type* of Historical Equipment Note maybe selected from the pull-down menu. Note to remove a piece of equipment from the Work Planners Report, Equipment Inspection must be selected. *Linked Documents* maybe added by selecting Add File and then selecting the saved file from the Computer. Enter the *Date* when the inspection was completed and enter any *Comments* pertaining to the inspection. Select *Save* after all information has been entered.

Add Historical Equipment Note

Date:

Type:

Comment

Linked Documents [\[Add File \]](#) [\[Add URL \]](#) [\[Add Screen Capture \]](#)
No linked documents currently available