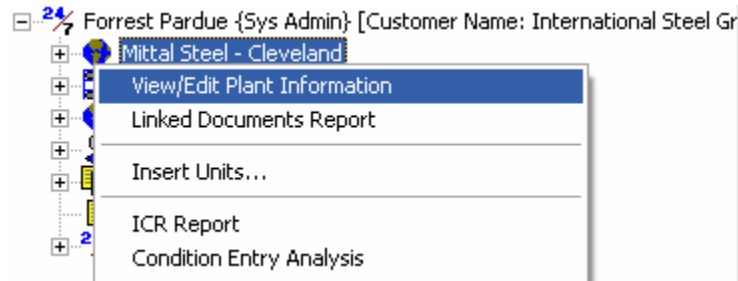
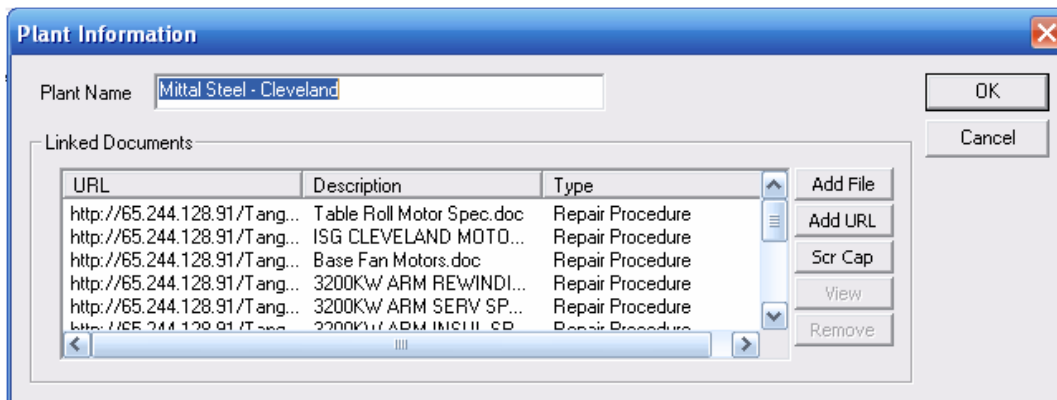


## Linking Procedure for Equipment Repair

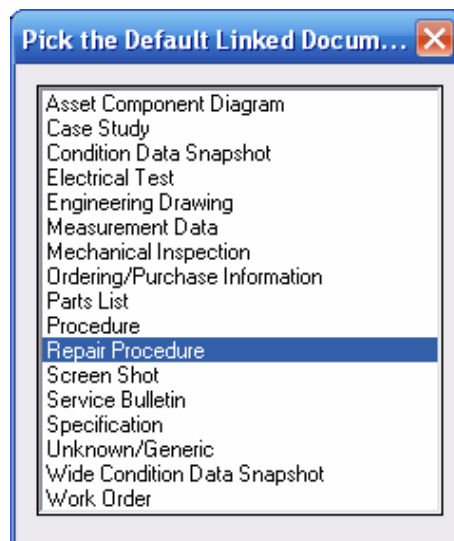
To link a repair procedure right click on the plant level of the tree and then select View/Edit Plant Information.



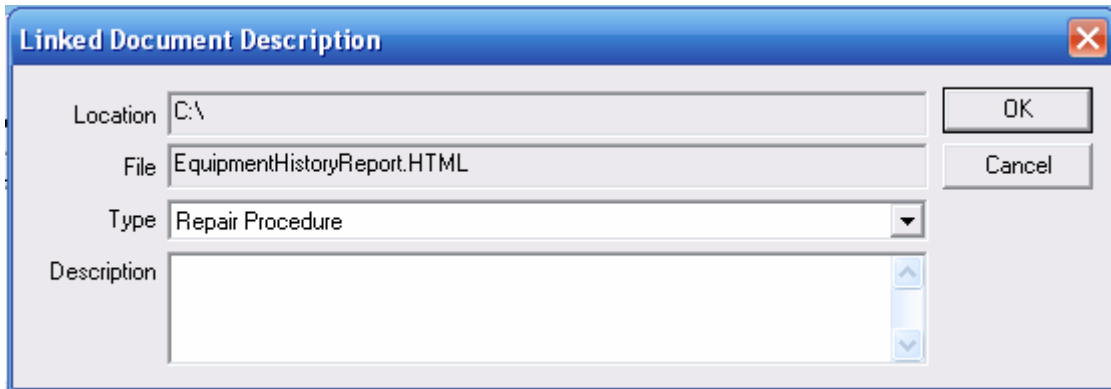
In the Plant Information window select the Add File button. In the folder window select the appropriate file to be linked.



In the order for the file to appear in Repair Tracker Repair Procedure must be selected in the Default Linked Document window.



In the Linked Document Description window enter a description of the file that is being linked and then select OK.



Linked Document Description

Location: C:\

File: EquipmentHistoryReport.HTML

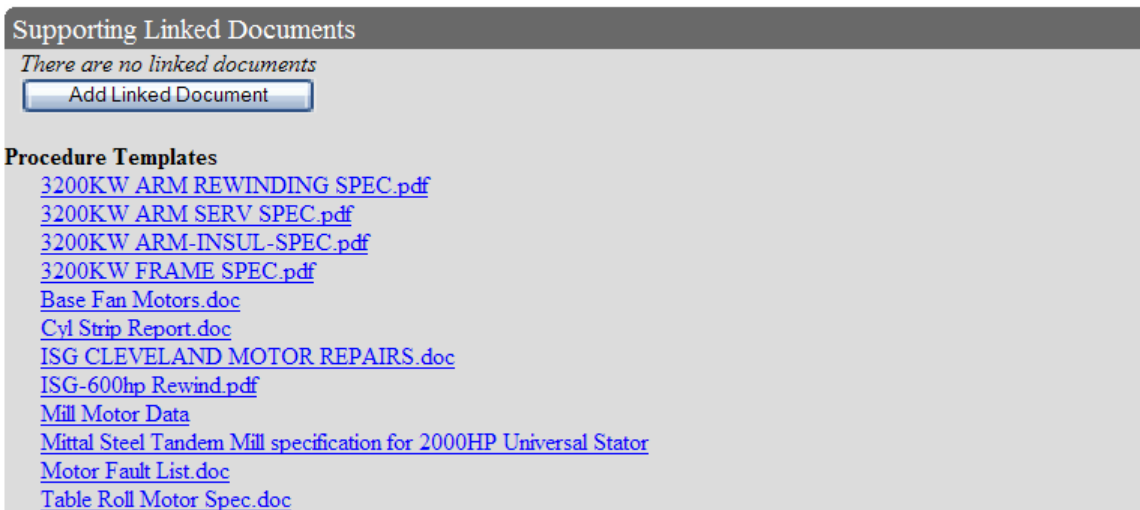
Type: Repair Procedure

Description:

OK

Cancel

The repair procedure will then appear in the Repair Data Entry Form under Procedure Templates.



Supporting Linked Documents

*There are no linked documents*

Add Linked Document

**Procedure Templates**

- [3200KW ARM REWINDING SPEC.pdf](#)
- [3200KW ARM SERV SPEC.pdf](#)
- [3200KW ARM-INSUL-SPEC.pdf](#)
- [3200KW FRAME SPEC.pdf](#)
- [Base Fan Motors.doc](#)
- [Cyl Strip Report.doc](#)
- [ISG CLEVELAND MOTOR REPAIRS.doc](#)
- [ISG-600hp Rewind.pdf](#)
- [Mill Motor Data](#)
- [Mittal Steel Tandem Mill specification for 2000HP Universal Stator](#)
- [Motor Fault List.doc](#)
- [Table Roll Motor Spec.doc](#)